



# ELECTRIC LEG-MOUNTED TILTING MIXER KETTLE



MODEL	CAPACITY	
ELTM-40	40 Gallon	152 Liter
ELTM-60	60 Gallon	227 Liter
ELTM-80	80 Gallon	303 Liter
ELTM-100	100 Gallon	380 Liter

## OPERATION SHALL BE BY:

Electrically, self-generating closed steam system equipped for operation on:

- ☐ 208 Volts, 3 Phase, 60 Hz
- ☐ 240 Volts, 3 Phase, 60 Hz

## OPTIONAL ITEMS AT EXTRA COST:

- ☐ Swing faucet on left console
- ☐ 3" manual butterfly valve (BV-2)
- ☐ 2" manual butterfly valve (BV-3)
- ☐ 33 KW elements
- ☐ 380 or 415 VAC, 50 Hz, 3 Phase
- ☐ 440, 460 or 480 VAC, 60 Hz, 3 Phase
- ☐ 575 or 600 VAC, 60 Hz, 3 Phase (not UL)
- ☐ Two piece lift off cover (MC-)
- ☐ Strainer for butterfly valve (MKS)
- ☐ Etched gallon markings (GM-)
- ☐ Etched litre markings (LM-)
- ☐ MMO motors (specify voltage)
- ☐ Kettle heat shield (KHS-)

## SPECIFICATIONS:

Shall be a Crown model \_\_\_\_\_, self-generating, electric kettle. Construction shall be welded stainless steel type 304 satin finish. A double wall kettle interior shall form a steam jacket around the lower 2/3 of the kettle, 316 stainless steel liner for high acid content products. The bottom of the kettle shall be of hemispheric design for maximum heat transfer. The tubular legs shall be constructed of stainless steel pipe fitted with four hole adjustable flanged feet for securing to the floor. A sealed stainless steel tilt mechanism shall permit the kettle to tilt forward a full 90° for complete emptying. The tilt mechanism shall be self locking for positive stop action.

## MIXER FEATURES:

The mixer is a variable speed unit powered by a 5 hp electric motor driving a hydraulic pump. Two agitators shall be included, a primary stainless steel scraper/agitator, and a secondary high speed mixer. Both agitators shall be removable for cleaning and no tools will be required for removal.

The console front to have the main power switch, mixer lift switch and variable speed control.

The bridge is constructed of 10 gauge stainless steel and contains two heavy duty hydraulic motors to drive the agitators. The bridge shall be power tilt, and swing 140° out of the way for kettle tilting or cleaning.

Kettle controls shall include a power switch, indicator light, vacuum/pressure gauge, pressure relief valve and low water shut off. Thermostat range to be 140°F to 285°F (60°C to 140°C), a maximum pressure of 50 psi (345 kPa). Electric elements to be removable.



Models:

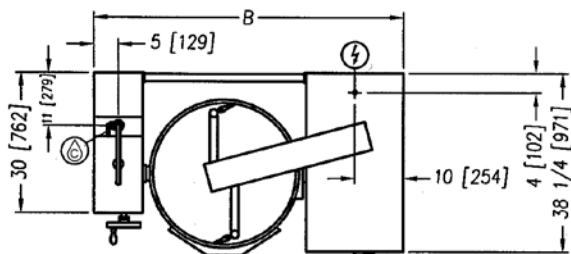
□ ELTM-40

□ ELTM-60

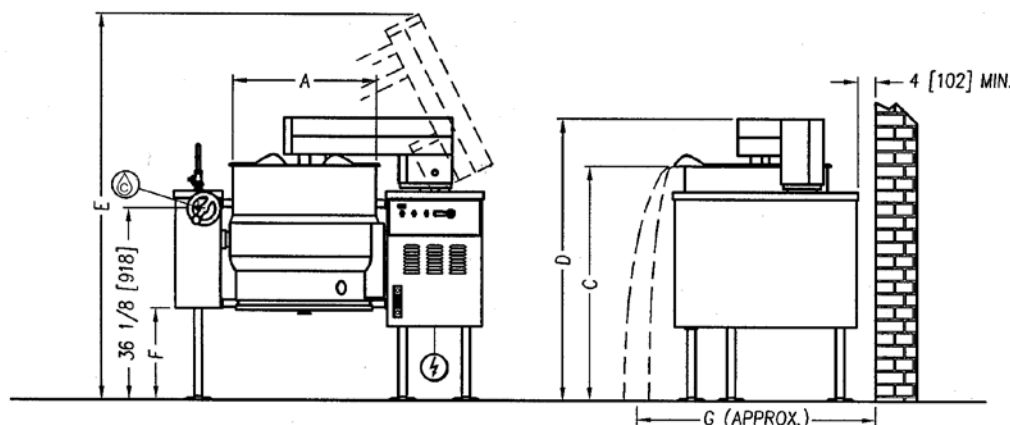
□ ELTM-80

□ ELTM-100

MODEL	SHIPPING WEIGHT	MINIMUM CLEARANCE	
ELTM-40	830 lbs. [377 kg]	SIDES BACK	3" [ 76 mm]
ELTM-60	880 lbs. [400 kg]		4" [ 102 mm]
ELTM-80	1050 lbs. [477 kg]		
ELTM-100	1295 lbs. [568 kg]		



FLANGED FOOT DETAIL  
4 EQUALLY SPACED  
Ø 7/16" (11mm) HOLES  
ON 3" (76mm) B.C.



#### DIMENSIONS

MODEL	CAPACITY	UNITS	A	B	C	D	E	F	G
ELTM-40	40 Gallons (151 liters)	inches (mm)	26" (660)	62.25" (1581)	45.5" (1156)	55" (1397)	75.63" (1921)	15.13" (384)	56" (1422)
ELTM-60	60 Gallons (227 liters)	inches (mm)	29.5" (749)	66" (1676)	49" (1245)	58.5" (1486)	80" (2032)	19.5" (495)	58" (1473)
ELTM-80	80 Gallons (303 liters)	inches (mm)	33" (838)	69.25" (1759)	49" (1245)	58.5" (1486)	80" (2032)	19.5" (495)	60" (1524)
ELTM-100	100 Gallons (380 liters)	inches (mm)	35.5" (902)	71.5" (1816)	49" (1245)	58.5" (1486)	85" (2159)	19.5" (495)	63" (1600)

#### ELECTRICAL CHARACTERISTICS

AVAILABLE kW		
MODEL	STANDARD	OPTIONAL
ELTM-40	24	N/A
ELTM-60	24	33
ELTM-80	24	33
ELTM-100	24	33

AMPS PER LINE								
kW	PHASE	208V	220V	240V	380V	415V	480V	600V
24	3	79.6	75.3	69.0	43.6	39.9	34.6	27.6
33	3	104.6	98.9	90.7	57.2	52.4	44.2	36.3

#### SERVICE CONNECTIONS

Ⓒ – COLD WATER: 3/8" (10mm) nominal tubing to kettle fill faucet (Optional)

Ⓔ – ELECTRICAL CONNECTION: As specified by data plate

**INTENDED FOR COMMERCIAL USE ONLY.  
NOT FOR HOUSEHOLD USE.**



70 Oakdale Road, Toronto ON, Canada M3N 1V9  
(919) 762-1000 www.crownsteamgroup.com