



DIRECT STEAM KETTLE ON ELECTRIC CABINET BASE



*Not as shown.

SPECIFICATIONS:

Shall be a Crown model _____,

consisting of one 6 gallon (23 litre) or one 10 gallon (38 litre) direct connected steam tilting kettle on a 24" wide electric boiler base. The kettle shall have a double wall interior to form a steam jacket around the lower 2/3 of the kettle. The bottom of the kettle shall be of hemispherical design for superior heat circulation. Steam control valve mounted in leg. The tubular stainless steel mounting legs shall have the steam supply and condensate return pipes completely concealed within the leg members. The sealed stainless steel tilt mechanism bearings shall permit the kettle to tilt forward 90° for complete emptying. A removeable operating handle with heat proof knob shall be mounted on the left or right. Unit shall have a single support leg with nylon insert. Construction shall be all welded satin finish 304 stainless steel with a 316 stainless steel liner.

The boiler shall be 24 kW, 24" wide electric steam boiler cabinet. Polished stainless steel cabinet base shall be of modular design. Unit shall have 6" (152mm) stainless steel legs, 4 adjustable flanged feet for securing to the floor, reinforced stainless steel counter top and hinged door with magnetic latch. All piping shall be confined within the cabinet. Unit shall be automatically filled with water and brought to pressure when power switch is turned on. Cold water condenser shall automatically condense exhausted steam in water before releasing it to drain. Boiler controls shall include automatic water level, automatic blowdown, pressure gauge, water gauge glass, pressure control with pressure safety control, safety relief valve, split water lines, nickel plating, and CSD-1 controls secondary low water cut off.

Unit shall have a hot and cold water faucet with control valves, 3" (76 mm) deep sink with drain and splash guard.

Kettles and boiler shall be ASME code stamped and National Board registered.

SEE REVERSE SIDE OF SPEC SHEET FOR WATER TREATMENT SYSTEM STATEMENTS

MODEL	CAPACITY
EMT-6	6 gallon (23 litre)
EMT-10	10 gallon (38 litre)

OPERATION SHALL BE BY:

Electrically heated steam boiler operating at 15 psi (103 kPa) and rated at 24 kW.

The boiler shall be equipped for operation on:

- ☐ 208 VAC, 3 phase, 50/60 Hz
- ☐ 240 VAC, 3 phase, 50/60 Hz

STANDARD FEATURES:

- Water Treatment System.
- Reversible tilt handle.
- Type 316 stainless steel liner.
- Steam control valve.
- Deck mount hot and cold faucet with riser.
- Automatic blowdown
- CSD-1 boiler controls

OPTIONAL ITEMS AT EXTRA COST:

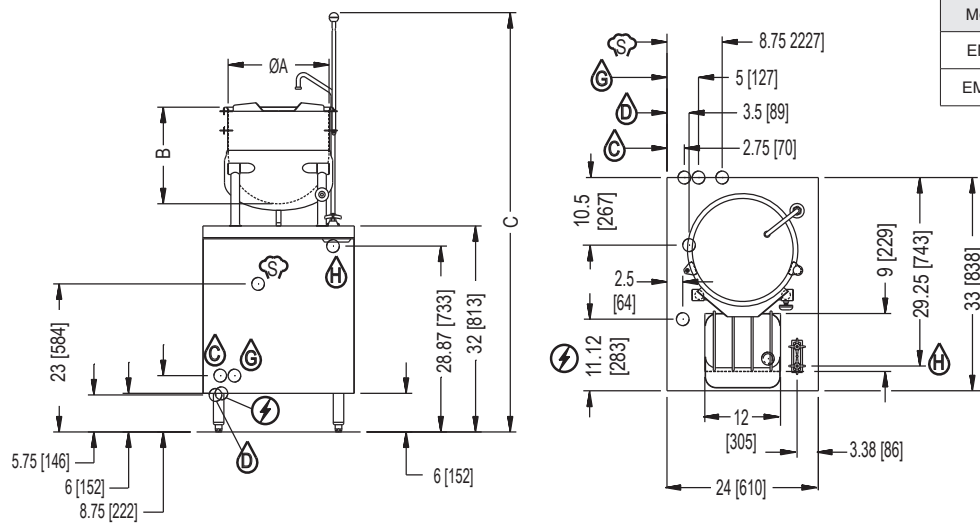
- ☐ 36 kw
- ☐ 42 kw
- ☐ 48 kw
- ☐ 220 VAC, 3 phase, 50/60 Hz
- ☐ 380 VAC, 3 phase, 50/60 Hz
- ☐ 415 VAC, 3 phase, 50/60 Hz
- ☐ 415/240 VAC, 3 phase, 50/60 Hz
- ☐ 380/220 VAC, 3 phase, 50/60 Hz
- ☐ 575 or 600 VAC, 3 Phase, 60 Hz (EBVS-3)
- ☐ Etched gallon markings (GM-).
- ☐ Etched litre markings (LM-).
- ☐ Correctional package
- ☐ Stainless steel back panel (SSB-24).
- ☐ Stainless steel frame (SSF-24).

ACCESSORIES:

- ☐ One piece stainless steel lift off cover (C-).
- ☐ Lift-out perforated stainless steel basket (SSB-).
- ☐ Contoured measuring strip (CMS-).
- ☐ Pour lip strainer (TKS-)
- ☐ Water in 'Y' strainer (Condenser Feed)



MODEL	SHIPPING WEIGHT	MIN. CLEARANCE
EMT-6	450 lbs. [204 kg.]	SIDES 0 [0 mm]
EMT-10	470 lbs. [213 kg.]	BACK 0 [0 mm]



**REAR FLANGED
FOOT DETAIL**
2 EQUALLY SPACED
Ø7/16" [11mm] HOLES
ON 2.5 [63] B.C.

NOTE: SPLASH GUARD NOT SHOWN IN FRONT VIEW.

IN [MM]

DIMENSIONS

MODEL	CAPACITY	A	B	C	D	E	F	G	H	J	K	L	M
EMT-6	6 gal. (23 L)	12 (305)	14.5 (368)	66.13 (1680)	3.5 (89)	10.5 (267)	8.75 (222)	5.5 (140)	7 (178)	2.5 (64)	11.12 (283)	9 (229)	12 (305)
EMT-10	10 gal. (38 L)	16 (406)	15 (381)	65.13 (1654)									

ELECTRICAL CHARACTERISTICS

MODEL	PHASE	kW	AMPS PER LINE					
			208V	220V	240V	380V	415V	480V
EMT-6 EMT-10	3	24	66.6	63	57.7	36.5	33.4	28.9
	3	36	99.9	94.5	86.6	54.7	50.1	43.3
	3	42	116.6	110.2	101	63.8	58.4	50.5
	3	48	N/A	N/A	115.5	72.9	66.8	57.7

SERVICE CONNECTIONS

- ELECTRICAL CONNECTION: Field wiring electrical connection to be as specified on data plate.
- SINK DRAIN: 2" (51 mm) IPS piped to open floor drain. No Solid Connection.
- CONDENSATE COLD WATER: 1/2" (13 mm) NPT at 25-50 PSI(170-345 kPa). (OPTIONAL)
- BOILER FEED WATER: 1/2" (13 mm) NPT at 25-50 PSI(170-345 kPa).
- HOT WATER: 3/8" (10 mm) O.D. tubing at 25-50 PSI(170-345 kPa).
- STEAM TAKE-OFF CONNECTION: 3/4" (19 mm) IPS optional to operate adjacent equipment.

WATER QUALITY STATEMENT

Water is the essential ingredient in steam equipment, water quality is the major factor affecting the performance of your appliance. Crown Steam Group offers a Comprehensive Water Treatment System which exceeds our minimum water requirements. Proof of installation and proper cartridges replacement is required for warranty coverage. Water supply to Crown Steam Group steamers must be within these guidelines.

Total dissolved solids.....Less than 60 PPM
Total alkalinityLess than 20 PPM
Silica.....Less than 13 PPM
ChlorineLess than 1.5 PPM
pH Factor6.8 - 7.3

Water which does not meet these standards should be treated with the installation of Middleby's Water Treatment System. Call 919-762-1000 if you have questions concerning your water meeting these parameters.

*Failure or malfunction of this appliance due to poor water quality is not covered under warranty.

Reference www.crownsteamgroup.com for complete warranty details and instructions.

**INTENDED FOR COMMERCIAL USE ONLY.
NOT FOR HOUSEHOLD USE.**



70 Oakdale Road, Toronto ON, Canada M3N 1V9
(919) 762-1000 www.crownsteamgroup.com